

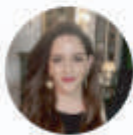
LA CAPPELLA SISTINA

COEDIZIONE
EDIZIONE MUSEI VATICANI-SCRIPTAMANEANT
EDIZIONE AMERICANA | CALLAWAY PUBLISHER

Forbes

Oct 30, 2020, 03:07pm EDT

This \$22,000 Book Gives You An Extraordinary Look Inside The Sistine Chapel



Nicole Trilivas Contributor

Travel

Author of GIRLS WHO TRAVEL. I write about luxury travel and high-end food and drink.



This new trilogy presents the entirety of the Sistine Chapel in book form

CALLAWAY ARTS &

ENTERTAINMENT

Scripta Maneant Edizioni
Centralino Unico
+39 051 223535
Numero Verde:
800 144 944
segreteria@scriptamaneant.it
www.scriptamaneant.it
CF e Partita Iva
02287750356

Direzione generale
Via dell'Arcoveggio, 74/2
40129 Bologna
Referente: Anna Armaroli

Logistica
Via Felice Cavallotti, 18
42122 Reggio Emilia
Referente: Francesco Iori

Impronta d'Artista
www.improntadartista.it
Anna Armaroli
a.armaroli@improntadartista.it

Ufficio Stampa
Silvia Gnoni
ufficio.stampa@scriptamaneant.it

Ufficio Estero
foreigndepartment@scriptamaneant.it

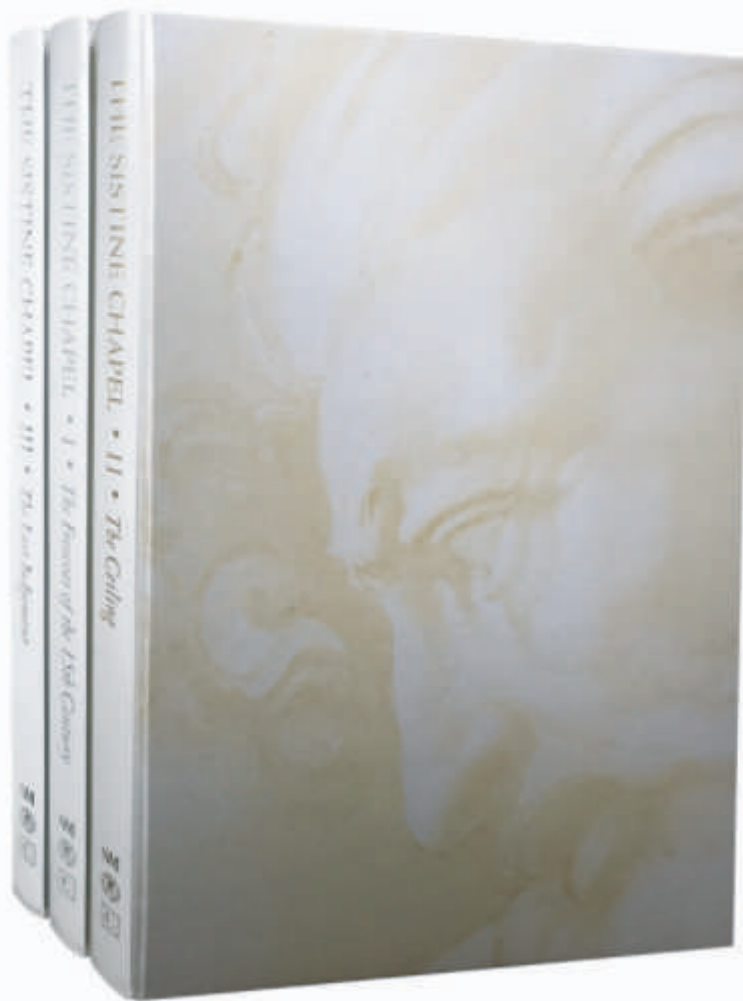
Magnus Edizioni
www.magnusedizioni.it

LA CAPPELLA SISTINA

COEDIZIONE
EDIZIONE MUSEI VATICANI-SCRIPTAMANEANT
EDIZIONE AMERICANA | CALLAWAY PUBLISHER

*Can't make it to Rome this year? Comprised of three 25-pound, two-foot-tall volumes, **The Sistine Chapel** is the new monumental book set that shows off every single centimeter of the Sistine Chapel in ultra-high definition with 99-percent color fidelity.*

Seeing the Sistine Chapel in person can be a divine experience, but the sheer scale and size of Michelangelo's masterpiece—plus the overwhelming crowds—make it hard to get up close and personal with this seminal work of art. Not so with the remarkable, unprecedented new release, *The Sistine Chapel*, which presents the entirety of the hallowed space in book form.



Scripta Maneant Edizioni
Centralino Unico
+39 051 223535
Numero Verde:
800 144 944
segreteria@scriptamaneant.it
www.scriptamaneant.it
CF e Partita Iva
02287750356

Direzione generale
Via dell'Arcoveggio, 74/2
40129 Bologna
Referente: Anna Armaroli

Logistica
Via Felice Cavallotti, 18
42122 Reggio Emilia
Referente: Francesco Iori

Impronta d'Artista
www.improntadartista.it
Anna Armaroli
a.armaroli@improntadartista.it

Ufficio Stampa
Silvia Gnoni
ufficio.stampa@scriptamaneant.it

Ufficio Estero
foreigndepartment@scriptamaneant.it

Magnus Edizioni
www.magnusedizioni.it

LA CAPPELLA SISTINA

COEDIZIONE
EDIZIONE MUSEI VATICANI-SCRIPTAMANEANT
EDIZIONE AMERICANA | CALLAWAY PUBLISHER

Made up of three volumes (weighing a collective 75 pounds), this ultra-deluxe limited edition set took five years to create and comes care of a collaboration between the Vatican Museums; Italian art publisher, Scripta Maneant; and Callaway Arts & Entertainment, an internationally renowned, high-end design, production and publication house.

“The idea is that the Sistine Chapel is one of the masterworks of western art that the whole world thinks it knows, but in reality, we don’t know it because we can’t see it—because it’s 60 feet up,” says Nicholas Callaway, founder and CEO of Callaway Arts & Entertainment. “When you go, of course it’s an amazing experience, but you’re shepherded through with 20,000 to 25,000 other people per day and you can’t take pictures, so it’s not an ideal user experience.”

MORE FOR YOU

Travel Expert Rick Steves On Coronavirus, Business Ethics And His New Book

Inside Marrakesh: Peek Into One Of The Most Beautiful Places On Earth

Paris Chic: Photos To Make You Want To Visit France Next Year

Harnessing state-of-the-art gigapixel photography, Callaway Arts & Entertainment and their co-collaborators strove to change the limited user experience of an in-person viewing by capturing every single centimeter of the Sistine Chapel and then reproducing in life-size. “It’s such a revelation,” says Callaway. “You get to see the Sistine Chapel in a way that no one has.” That’s the reason for the book’s mammoth size: the photographs present a one-to-one, true-to-life perspective. “It’s at arm’s length, so that you have the same perspective of Michelangelo [when he was] painting it.”

Scripta Maneant Edizioni
Centralino Unico
+39 051 223535
Numero Verde:
800 144 944
segreteria@scriptamaneant.it
www.scriptamaneant.it
CF e Partita Iva
02287750356

Direzione generale
Via dell’Arcoveggio, 74/2
40129 Bologna
Referente: Anna Armaroli

Logistica
Via Felice Cavallotti, 18
42122 Reggio Emilia
Referente: Francesco Iori

Impronta d’Artista
www.improntadartista.it
Anna Armaroli
a.armaroli@improntadartista.it

Ufficio Stampa
Silvia Gnoni
ufficio.stampa@scriptamaneant.it

Ufficio Estero
foreigndepartment@scriptamaneant.it

Magnus Edizioni
www.magnusedizioni.it